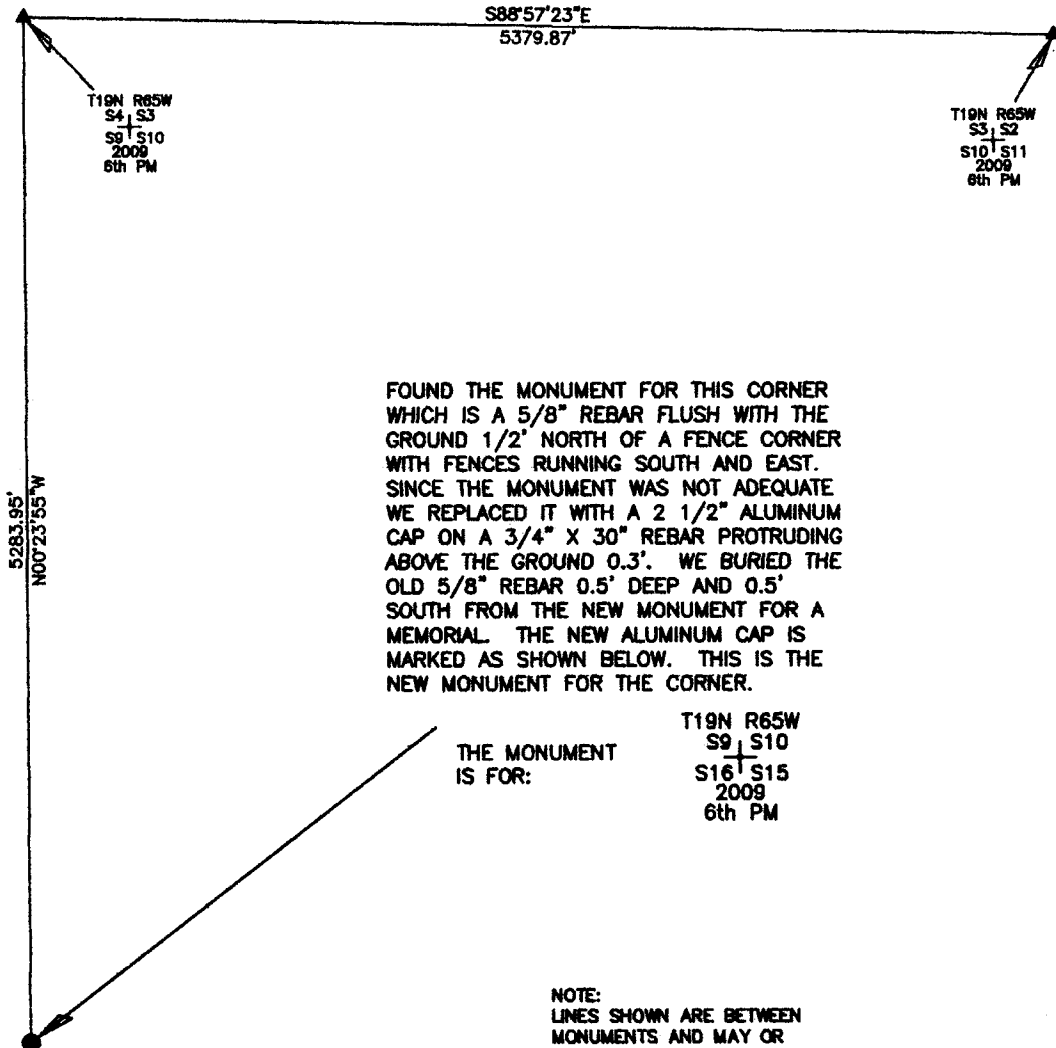


# State of Wyoming Corner Record

(In compliance with the *CORNER PERPETUATION AND FILING ACT*, Wyoming Statutes, 1977, Section 36-11-101, et. seq., and the Rules and Regulations of the Board of Registration for Professional Engineers and Land Surveyors.)

Reverse side of this form may be used if more space is needed.

Record of original survey and citation of source of historic information (if corner is lost or obliterated). Description of corner monumentation evidence found and/or monument and accessories established to perpetuate the location of this corner. Sketch of relative location of monument, accessories, and reference points with course and distance to adjacent corner(s) (if determined in this survey). Method and rationale for reestablishment of lost or obliterated corner.

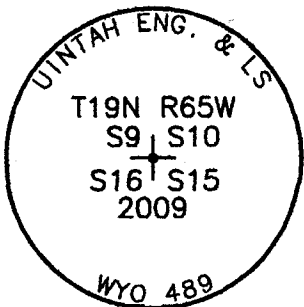


FOUND THE MONUMENT FOR THIS CORNER WHICH IS A 5/8" REBAR FLUSH WITH THE GROUND 1/2' NORTH OF A FENCE CORNER WITH FENCES RUNNING SOUTH AND EAST. SINCE THE MONUMENT WAS NOT ADEQUATE WE REPLACED IT WITH A 2 1/2" ALUMINUM CAP ON A 3/4" X 30" REBAR PROTRUDING ABOVE THE GROUND 0.3'. WE BURIED THE OLD 5/8" REBAR 0.5' DEEP AND 0.5' SOUTH FROM THE NEW MONUMENT FOR A MEMORIAL. THE NEW ALUMINUM CAP IS MARKED AS SHOWN BELOW. THIS IS THE NEW MONUMENT FOR THE CORNER.

THE MONUMENT IS FOR:

T19N R65W  
S9, S10  
S16, S15  
2009  
6th PM

NOTE:  
LINES SHOWN ARE BETWEEN MONUMENTS AND MAY OR MAY NOT BE SECTION OR SECTION SUBDIVISION LINES.



THE MONUMENT IS MARKED

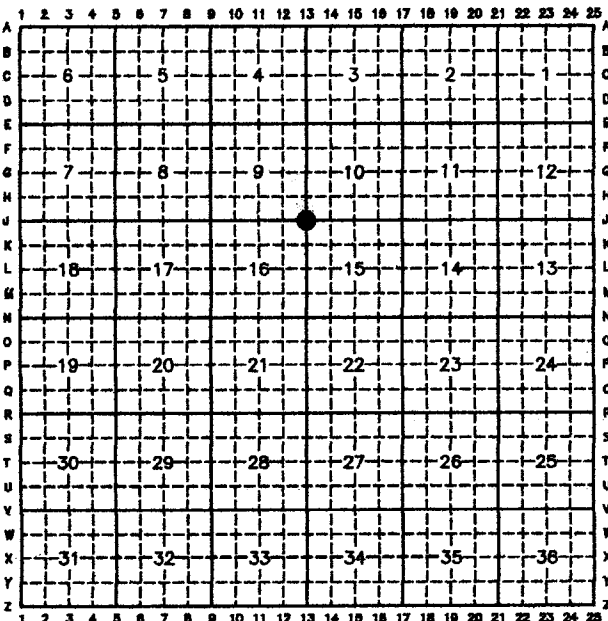
**CORNER MONUMENT SYMBOLS**

- RECORD IS FOR THIS CORNER MONUMENT.
- ▲ A RELATED CORNER OR WC MONUMENT.

SCALE 1"=1000'  
(EXCEPT IN TRIVIAL CASES)  
BEARINGS ARE RELATED TO WGS 84 WITH GPS OBSERVATIONS  
DRAWN BY: NJM  
P.C. J. FLOYD  
COUNTY: LARAMIE

Date of Field Work: 04/16/2009 Office Reference: \_\_\_\_\_

**CROSS INDEX DIAGRAM**

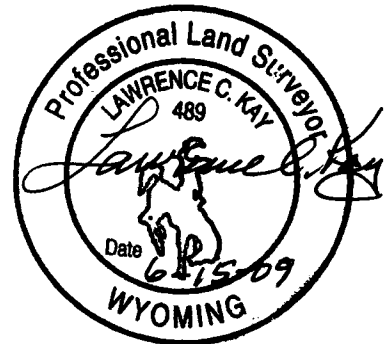


Firm/Agency, Address

UELS, LLC  
85 South 200 East  
Vernal, Utah 84078  
435-789-1017

This corner record was prepared by me or under my direction and supervision.

SEAL & SIGNATURE



RECORDED 6/22/2009 AT 12:06 PM REC# 525086 3K# 2118 PG# 884  
DEBRA K. LATHROP, CLERK OF LARAMIE COUNTY, WY PAGE 1 OF 1